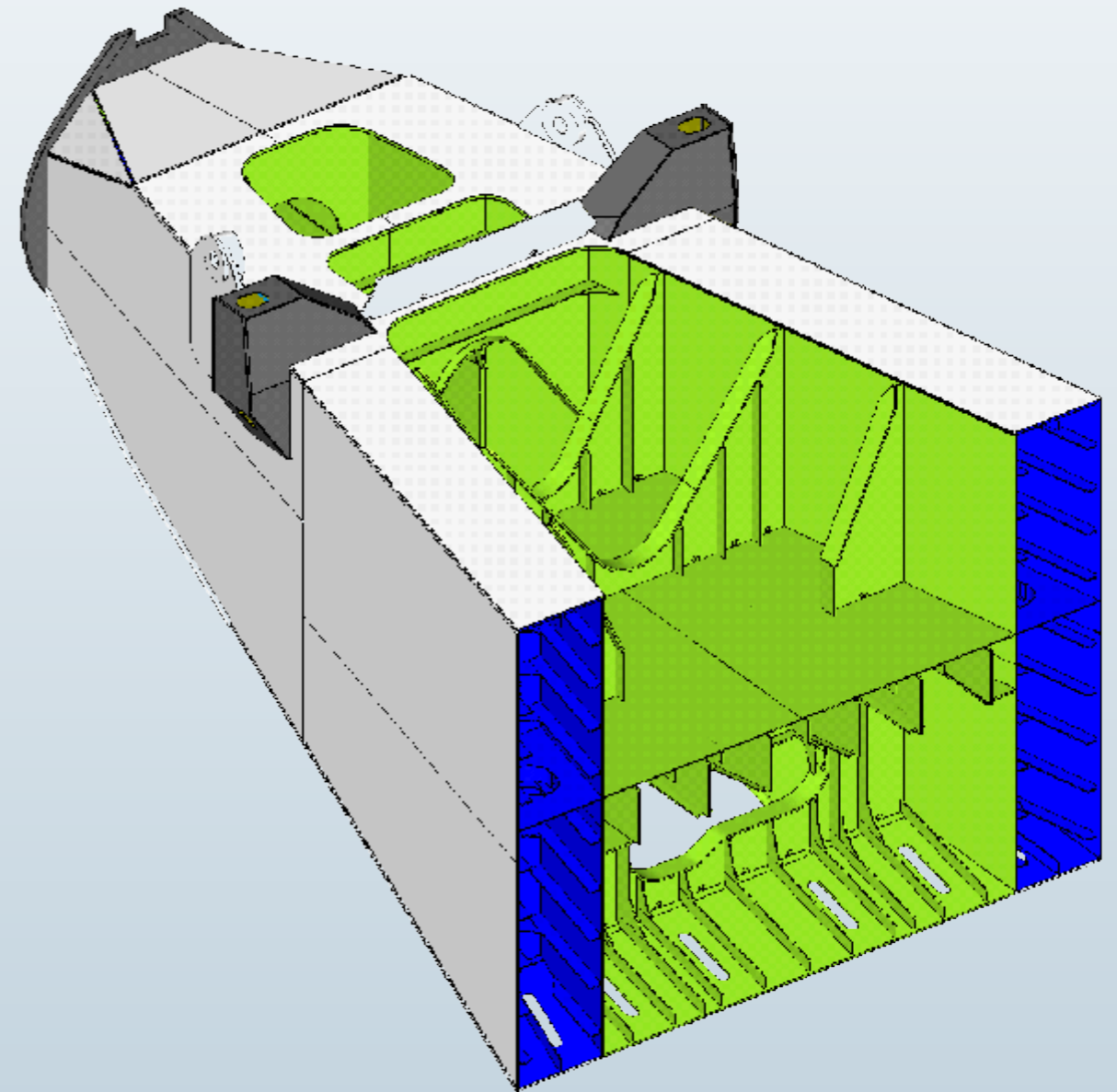
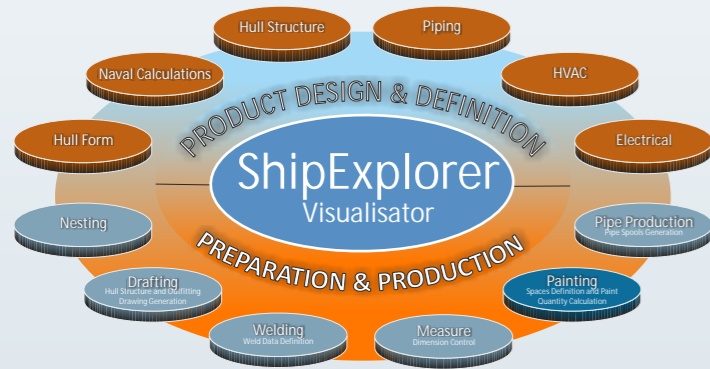


TRIDENT ShipExplorer™ suite

A modular suite that complement the CAD system by using the 3D model data for production purposes. Consists of 7 modules: Visualisator (module for ship's visualisation), Drafting (creation of shipbuilding documentation), Painting (spaces definition and estimation of paint quantities), Nesting (for plates and profiles), Welding (weld data definition), Measure (dimension control) and Pipe Production (pipe spools generation).



Our strengths

- 30 years of experience in shipbuilding industry
- Over 150 man-years experience in programming and application development
- Expertize in shipbuilding processes
- Rapid support for user questions, customization and new feature requests
- Constant development and improvement of our products

© July 2013 - All rights reserved. Information described herein is furnished for information use only and is subject to change without notice. TRIDENT Painting™ is a part of TRIDENT ShipExplorer™ suite.

To find out more, please visit www.uscs.hr/shipexplorer.htm

USCS d.o.o. | Flaciusova 1, HR-52100 Pula, Croatia | + 385 52 374 441 | uscs@uscs.hr | www.uscs.hr



